

# PRIVACY WALL INSTALLATION

## TABLE OF CONTENTS

INSTALLING SURFACE MOUNT PRIVACY POST	Page 2
INSTALLING FASCIA MOUNT PRIVACY POST	Page 3
INSTALLING GROUND PRIVACY POST	Page 5
INSTALLING PRIVACY BOARDS	Page 7
INSTALLING COMPOSITE PRIVACY BOARDS	
SURFACE MOUNT COMPOSITE	Page 8
FASCIA MOUNT COMPOSITE	Page 9
INSTALLING PRIVACY GATE	Page 14

## TOOLS REQUIRED

- EYE AND EAR PROTECTION
- POWER DRILL
- No. 2 ROBERTSON HEAD DRIVER BITS
- MEASURING TAPE
- RUBBER Mallet
- UTILITY KNIFE
- MITER SAW WITH 80 TOOTH BLADE (IDEAL)
- LEVEL
- PENCIL

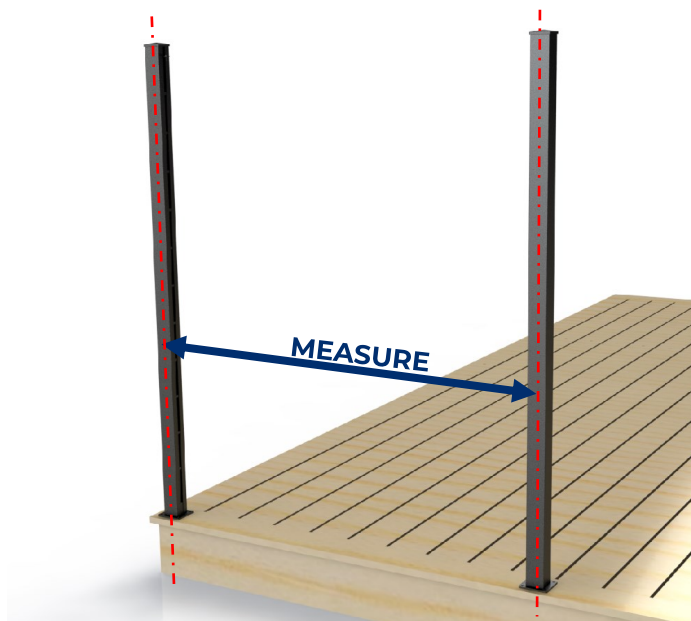
# PRIVACY WALL

## SURFACE POST INSTALLATION

### STEP 1

Evenly space posts  
on deck surface.

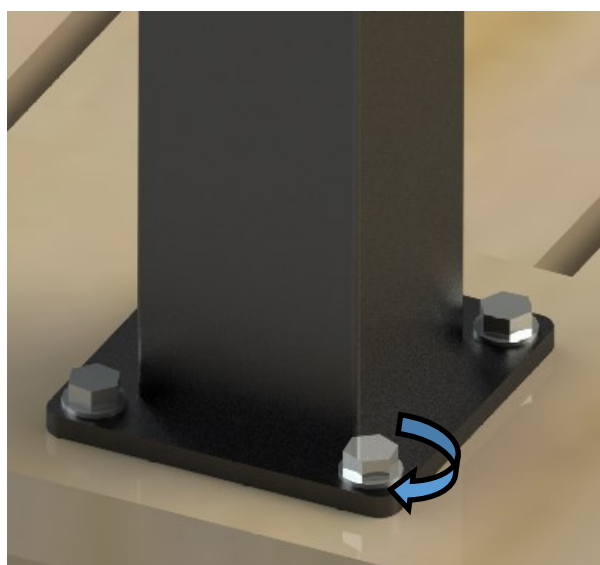
If used as a guardrail, post  
must measure a maximum of  
60" center to center in  
Canada, 48" center to center  
in the USA, but 72" center to  
center for ground floor  
applications when not  
used as a guardrail <sup>3</sup>.



### STEP 2

Fasten privacy post to deck  
surface. Level and shim  
(if necessary).

*Engineered Fastening details  
available upon request if  
required.*



**Continue at Step 3...**

<sup>3</sup> Consult your local building code authorities for distinction between what is considered a guard rail for your jurisdiction.

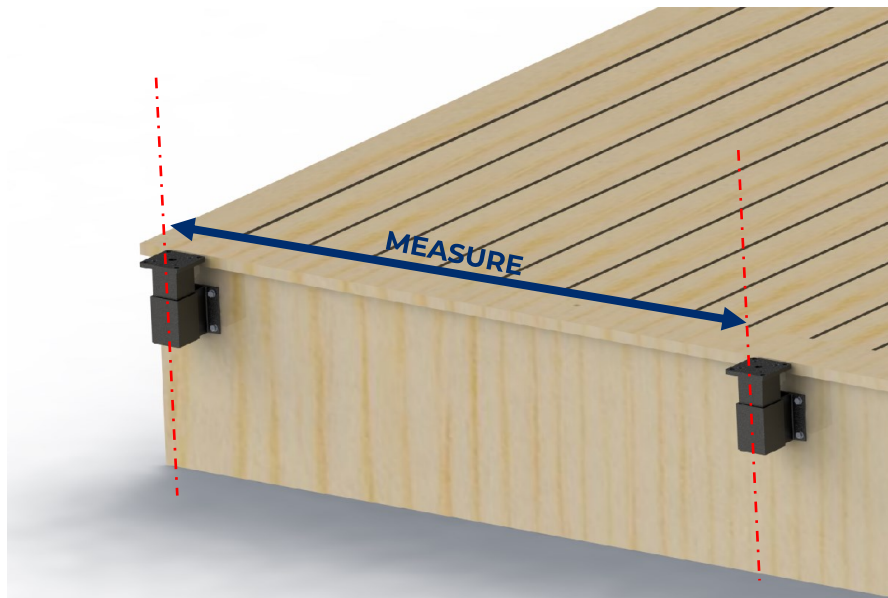
# PRIVACY WALL

## FASCIA MOUNT INSTALLATION

### STEP 1

Evenly space fascia brackets around the deck edge

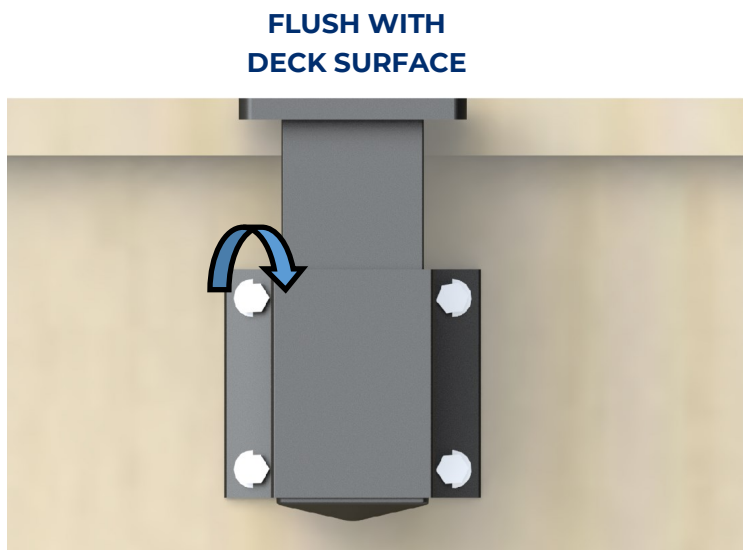
If used as a guardrail, fascia brackets must measure a maximum of 60" center to center in Canada, 48" center to center in the USA, but 72" center to center for ground floor applications when not used as a guardrail <sup>4</sup>



### STEP 2a

Next fasten fascia bracket to deck edge. Top of fascia bracket must be flush with deck level as shown. Level and shim (if necessary).

*Engineered Fastening details available upon request if required.*



<sup>4</sup> Consult your local building code authorities for distinction between what is considered a guard rail for your jurisdiction.

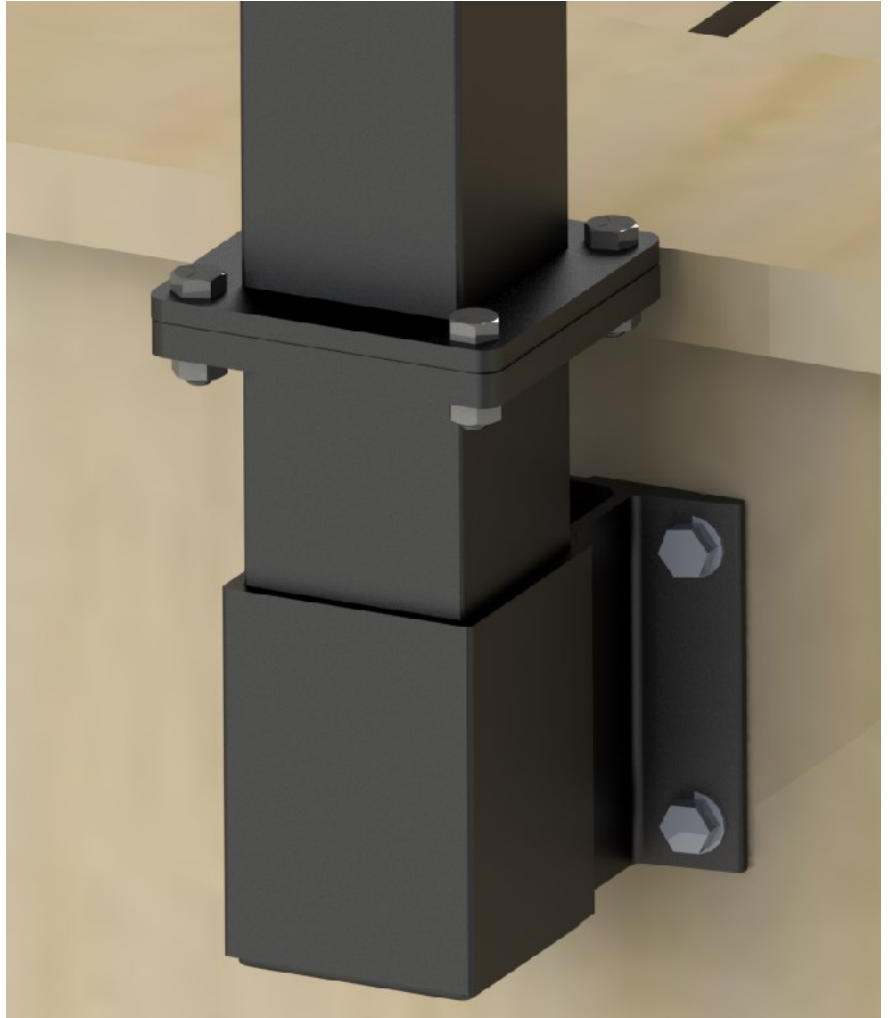
# PRIVACY WALL

## FASCIA MOUNT INSTALLATION

### STEP 2b

Fasten privacy post to fascia  
bracket, level and  
fasten with supplied  
nuts & bolts.

*Continue at Step 3...*



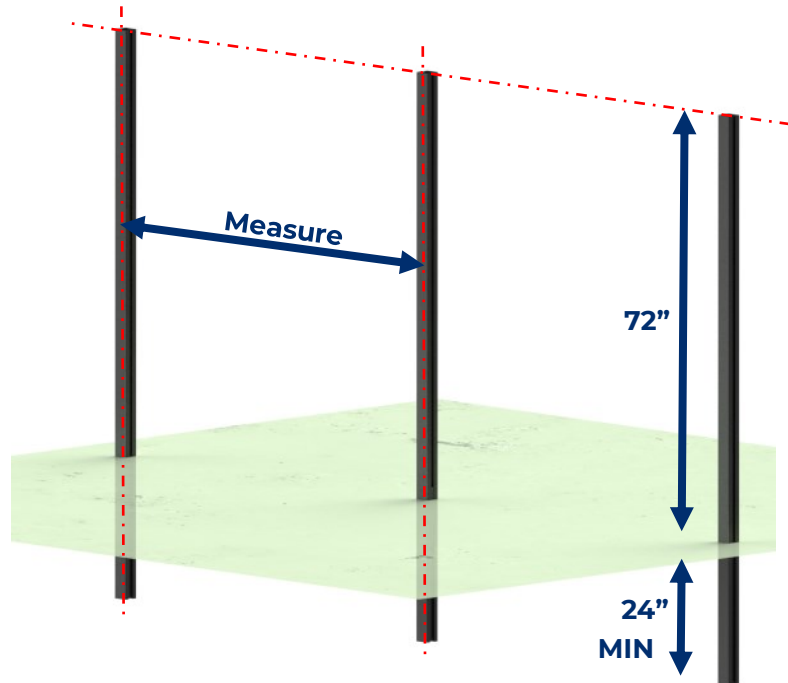
# PRIVACY WALL

## GROUND POST INSTALLATION

### STEP 1

Install Privacy Posts 72" above ground and a minimum of 24in below ground level. If used as a guardrail, post must measure a maximum of 60" center to center in Canada, 48" center to center in the USA, but 72" center to center for ground floor applications when not used as a guardrail <sup>5</sup>.

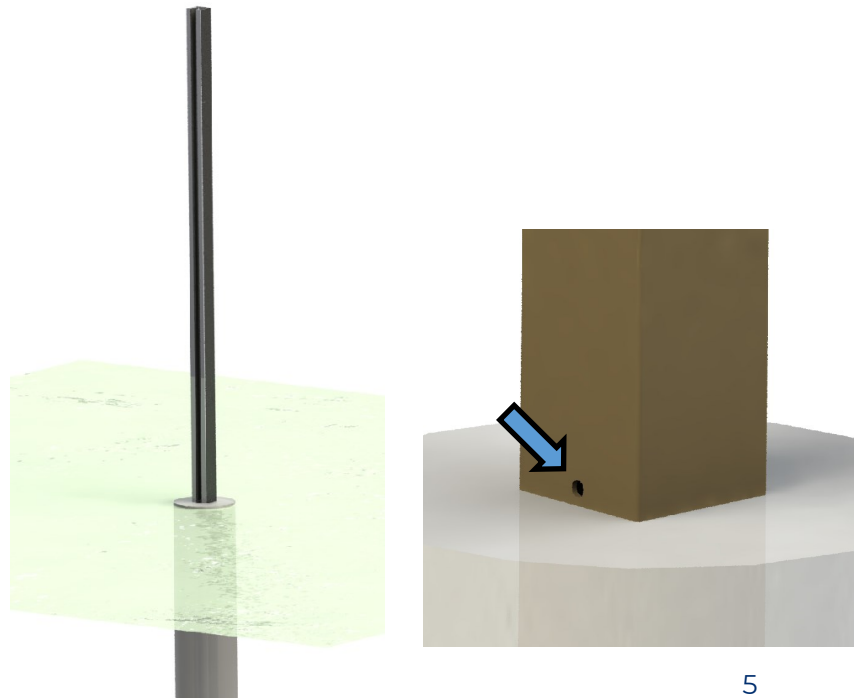
*Post should be below the frost line for your area to avoid frost heave.*



### STEP 2a

If securing ground posts into cement, we recommend using an asphalt or bituminous coating product on the inside and outside portion of the post that is below ground. This will protect against any possible corrosion and/or reaction between raw aluminum and wet concrete.

When concrete is cured, drill a 1/4" weeping hole near the bottom of the post.



5

<sup>5</sup> Consult your local building code authorities for distinction between what is considered a guard rail for your jurisdiction.

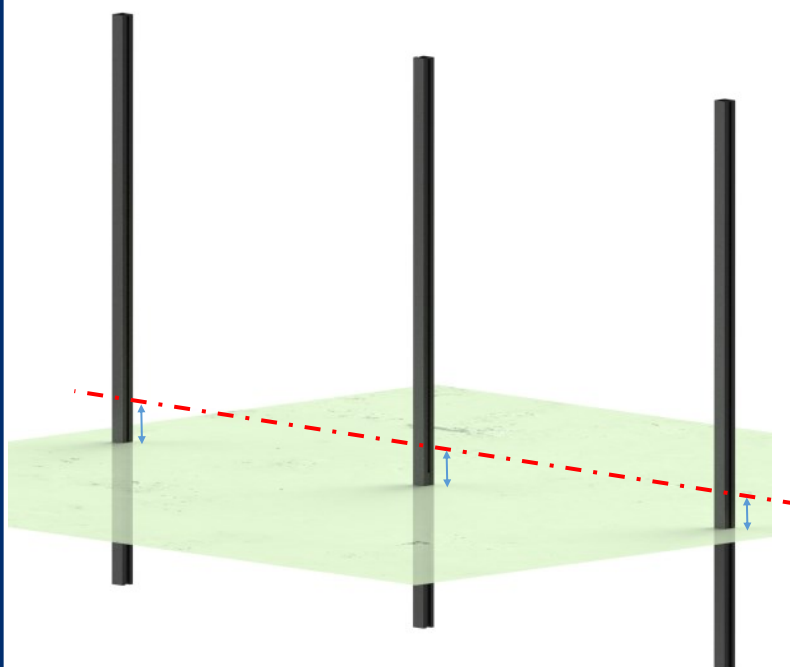
## PRIVACY WALL

### GROUND POST INSTALLATION

#### STEP 2b

Position a level line 2-1/8" above the ground surface on the first post and extend the line to the end. This will locate the bottom of the first board. Measure the distance from the line to the ground and cut supplied 9-1/8" rubber block to fit.

*Continue with Step 3...*



# PRIVACY WALL

## PRIVACY BOARD INSTALLATION

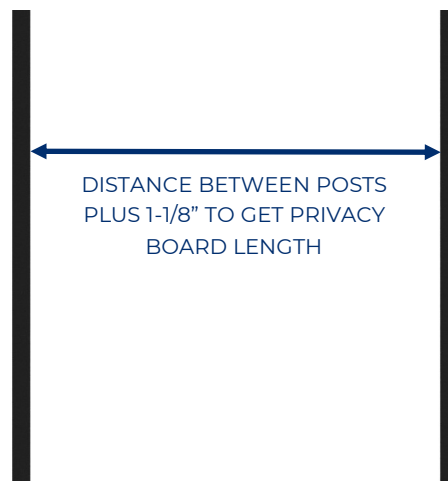
### STEP 3

Which type of board are you installing?

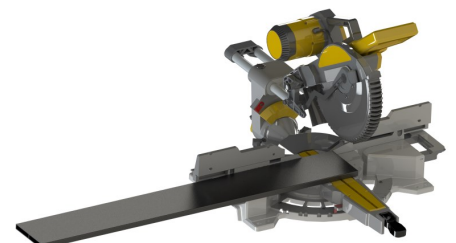
1. If using Century aluminum privacy boards continue with **Step 6**
2. If using composite boards for surface mount posts continue with **Step 4**
3. If using composite boards for fascia mount posts continue with **Step 5**

### STEP 6

Measure the distance in-between posts and add 1-1/8" to determine length of privacy boards.



BOARDS CAN BE CUT SLOWLY WITH A MITER SAW. 80 TOOTH BLADE IS IDEAL WHEN CUTTING ALUMINUM BOARDS



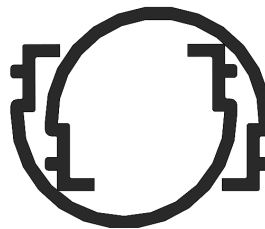
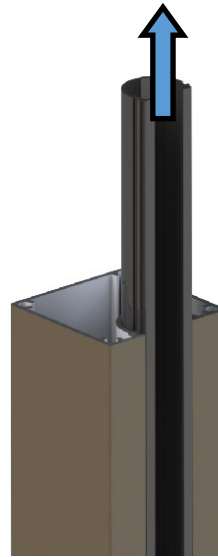


## PRIVACY WALL

### USING 1" x 5-3/8" COMPOSITE BOARDS – SURFACE MOUNT

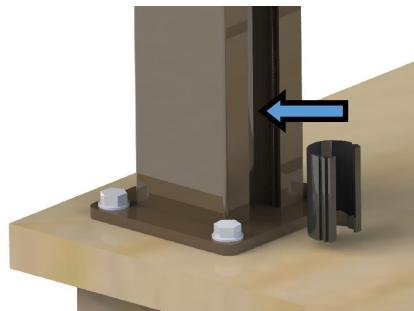
#### STEP 4:

Remove vinyl insert from inside of post. Cut vinyl insert into eleven **3/8"** pieces and one **1-7/8"** piece per post channel. These in combination with the supplied rubber blocks will act as spacers between each board. Composite boards must measure 1" thick or be milled to fit.

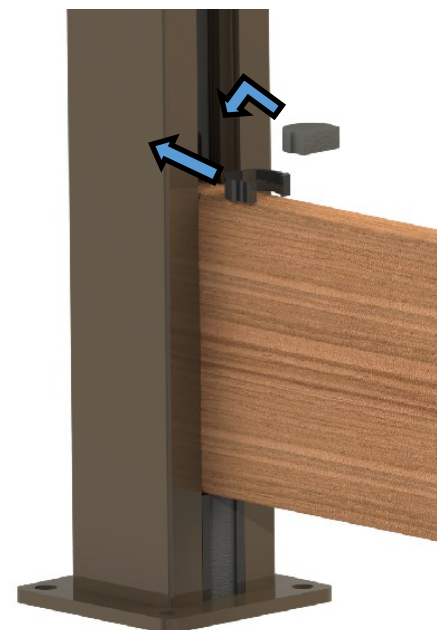


If you remove two Inserts and stack them like shown, you can slowly cut them on a miter saw. You have lots of extra material incase you damage some in the process.

Push the 1-7/8" vinyl insert into bottom of post flush against baseplate and slide 1-7/8" rubber block down inside vinyl insert.



Use a 3/8" vinyl & 3/8" rubber spacer block on top of each board.



**Continue with Step 6...**

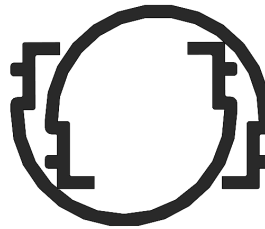
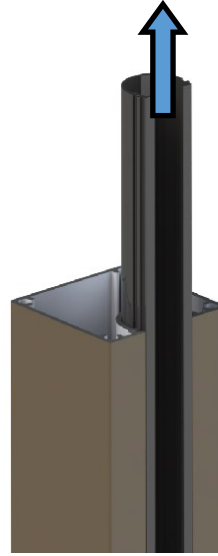


# PRIVACY WALL

## USING 1" x 5-3/8" COMPOSITE BOARDS – FASCIA MOUNT

### STEP 5:

Remove vinyl insert from inside of post. Cut vinyl insert into eleven **3/8"** pieces and one **9-1/8"** piece per post channel. These in combination with the supplied rubber blocks will act as spacers between each board.

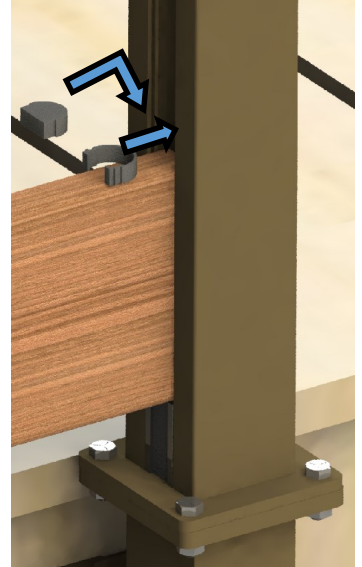
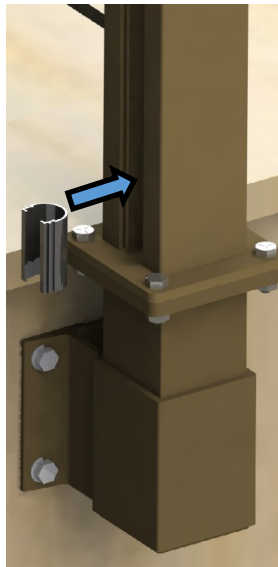


Pro Tip: If you stack two inserts like shown, you can slowly cut them on a miter saw. You have lots of extra material incase you damage some in the process.

Push the 1-7/8" vinyl insert into bottom of post. Slide 1-7/8" rubber block inside insert.

Use a 3/8" vinyl & 3/8" rubber spacer block on top of each board.

**Continue with Step 6...**



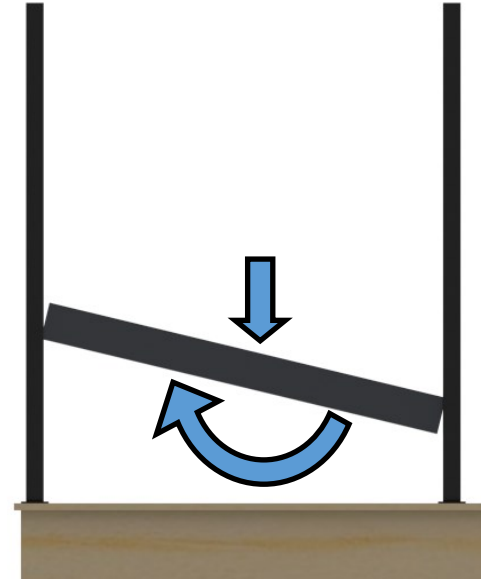
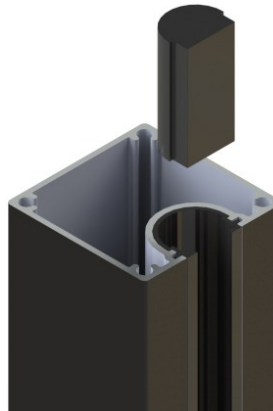
# PRIVACY WALL

## PRIVACY BOARD INSTALLATION

### STEP 7

Drop larger rubber spacer block <sup>6</sup> inside each vinyl insert.

Rotate and slide first privacy board into position against the rubber spacer block.



When installing more than one privacy section, we recommend you position and level the first board in each section.

Once in position, you can quickly add the remaining boards.

*If you prefer no space between your privacy boards continue with Step 8.*

*Otherwise continue with Step 9*



<sup>6</sup> Rubber block size will vary for surface mount, fascia mount, and ground post applications.

# PRIVACY WALL

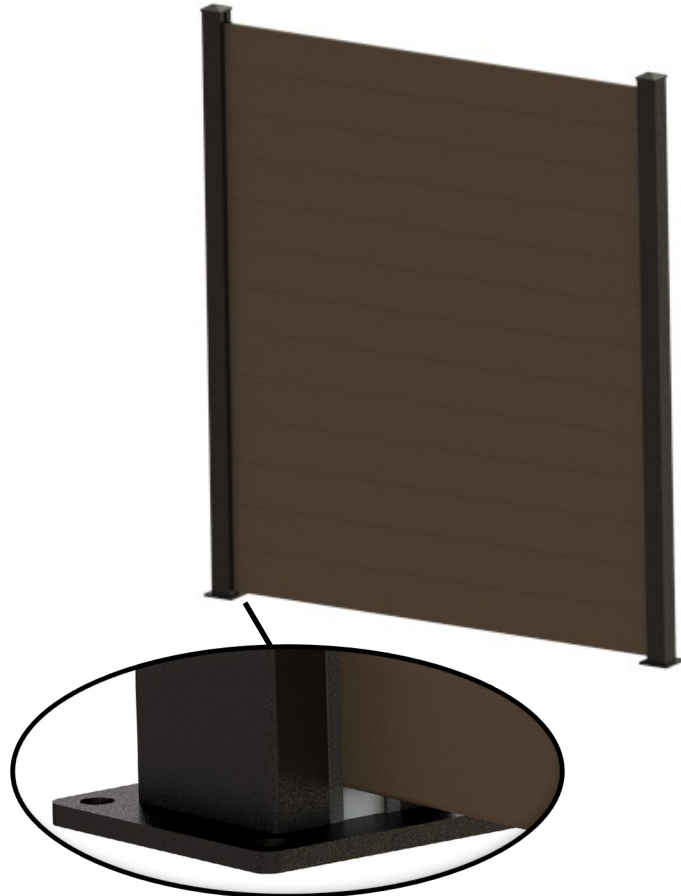
## PRIVACY BOARD INSTALLATION

### STEP 8

If you prefer no space between each privacy board, place one 3/8in rubber spacer between the post baseplate and the bottom of the first board.

For a fascia mounted posts trim 1.5in off the 9-1/8in rubber block.

*Note that you will now need 13 boards per privacy section instead of 12.*



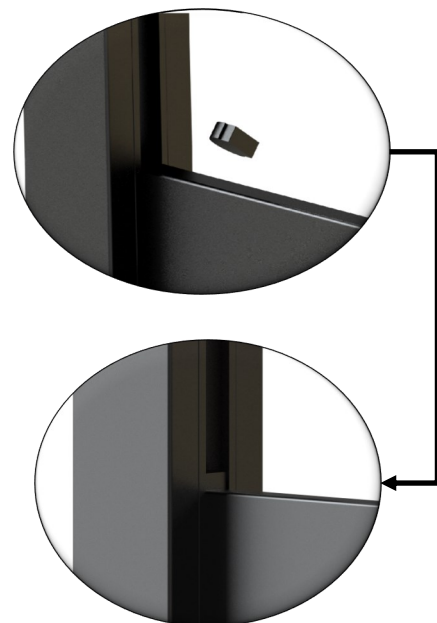
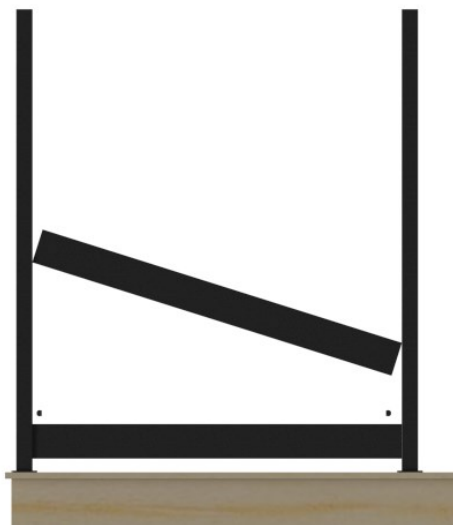
<sup>6</sup> Rubber block size will vary depending on application.

## PRIVACY WALL

### PRIVACY BOARD INSTALLATION

#### STEP 9

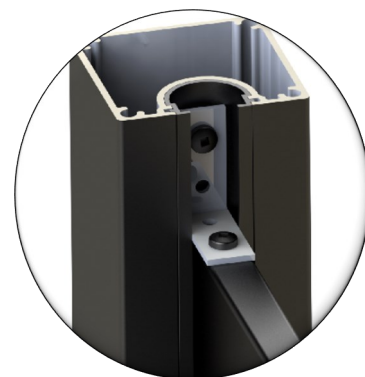
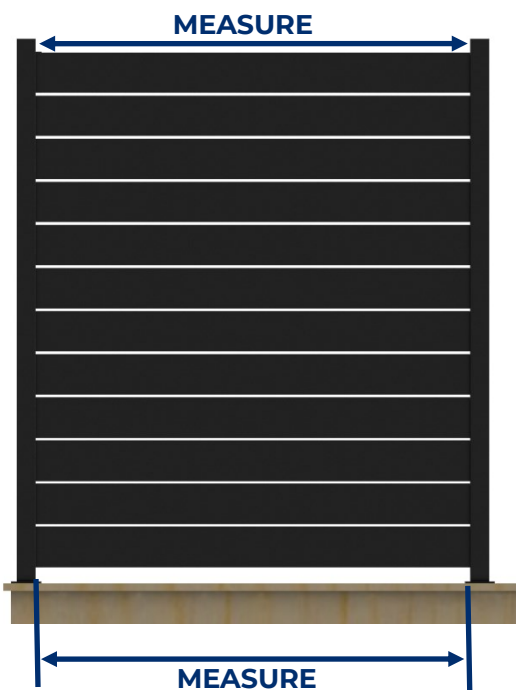
Add a 3/8" spacer block on top of each end of privacy board and slide in the next board. Continue until privacy wall is complete



#### STEP 10

Measure distance between posts at the top and ensure it equals the distance between posts at the bottom.

Fasten the top privacy board to the post on both ends using the supplied L-Brackets and #10x3/4 Screws.



## PRIVACY WALL INSTRUCTIONS

### STEP 11

Lay post caps on top of both post and gently tap with a rubber mallet until a solid fit is achieved.

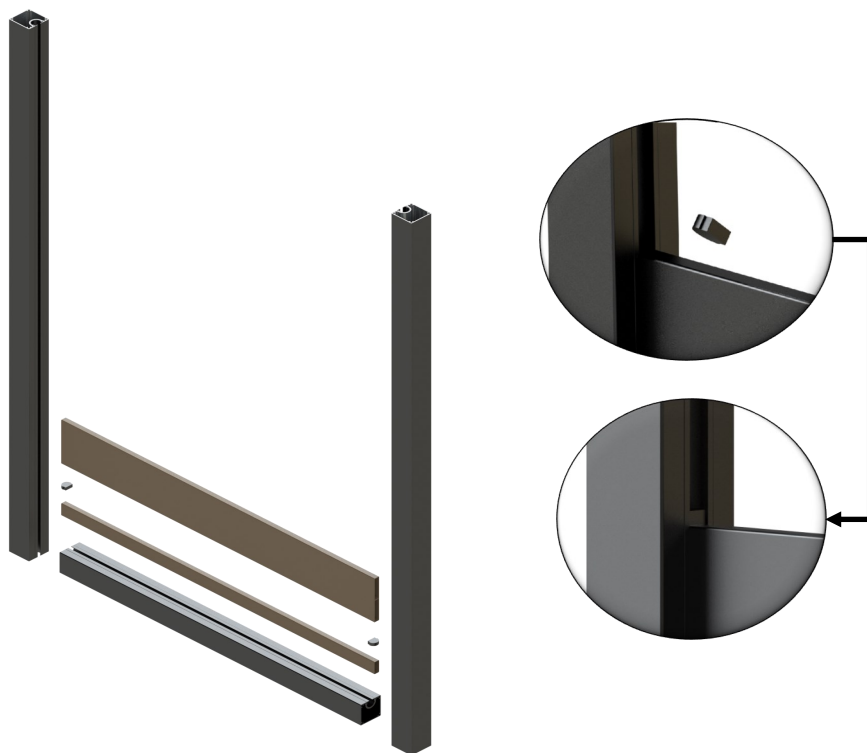


# PRIVACY GATE

## PRIVACY GATE INSTALLATION

### STEP 1

Press fit one narrow and full board separated by 3/8" rubber spacers inside the vertical and bottom horizontal post channels.

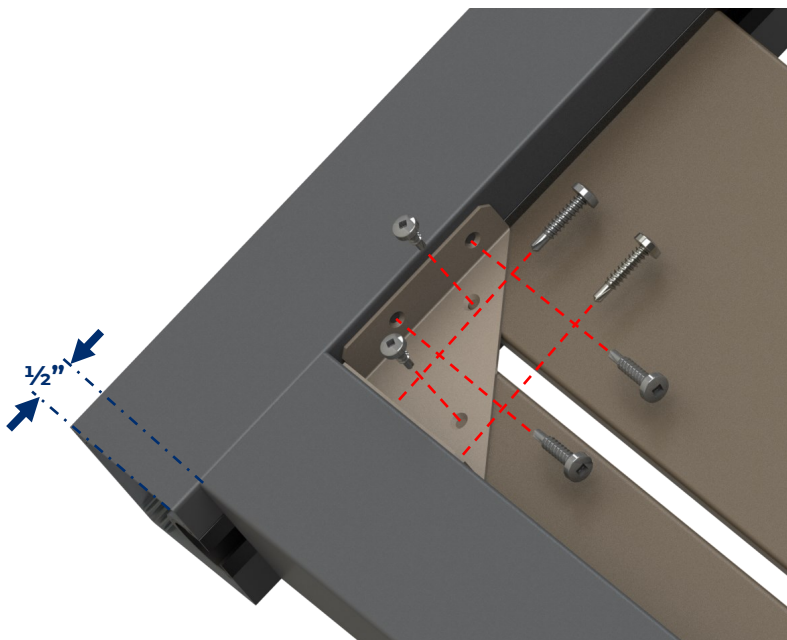


### STEP 2

Align so there is a 1/2" at the bottom of the vertical post.

Fasten corner brackets to the posts using #12x1" self drilling screws.

Next fasten the corner brackets to the boards using #10x1/2" screws.

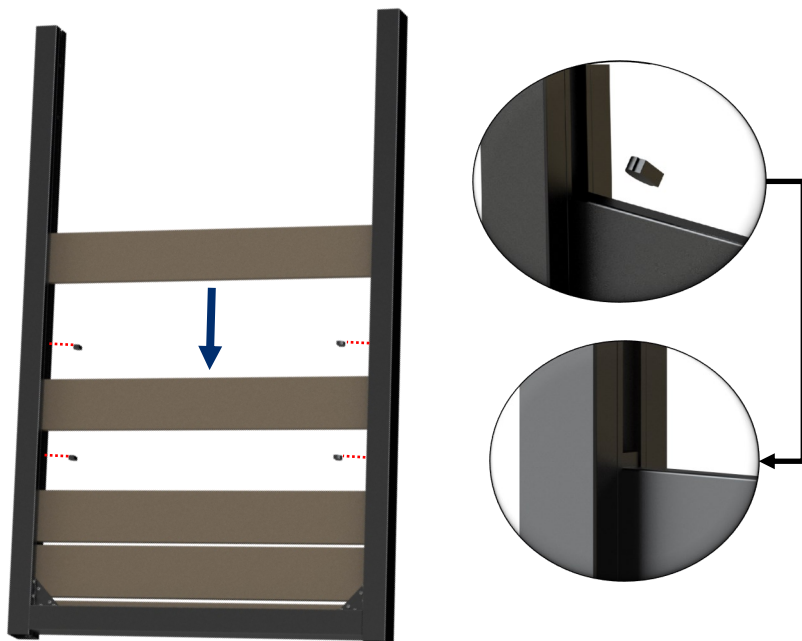


# PRIVACY GATE

## PRIVACY GATE INSTALLATION

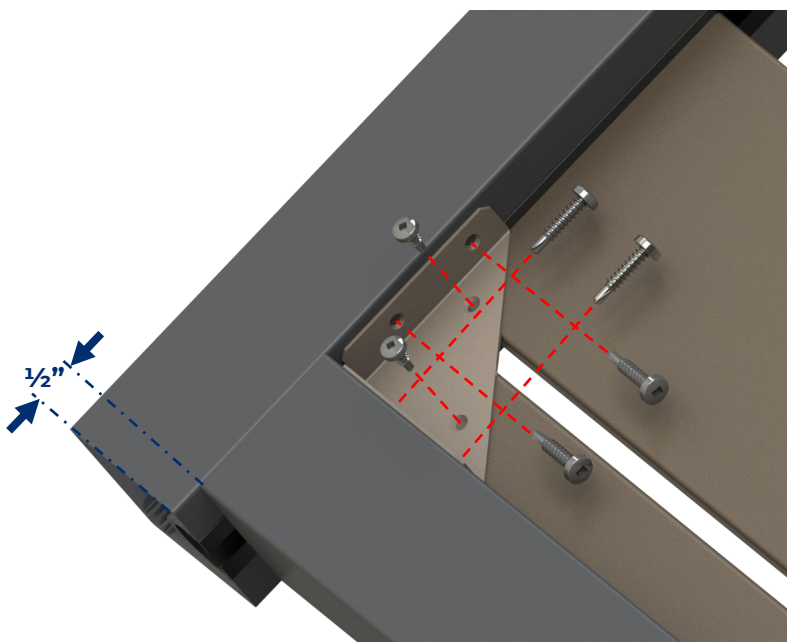
### STEP 3

Continue placing boards inside the vertical post channel while inserting rubber spacer blocks in-between each board. Finishing with a narrow board



### STEP 4

Place horizontal post tight against last board and fasten corner brackets on both sides with appropriate fasteners (Same as step 2).



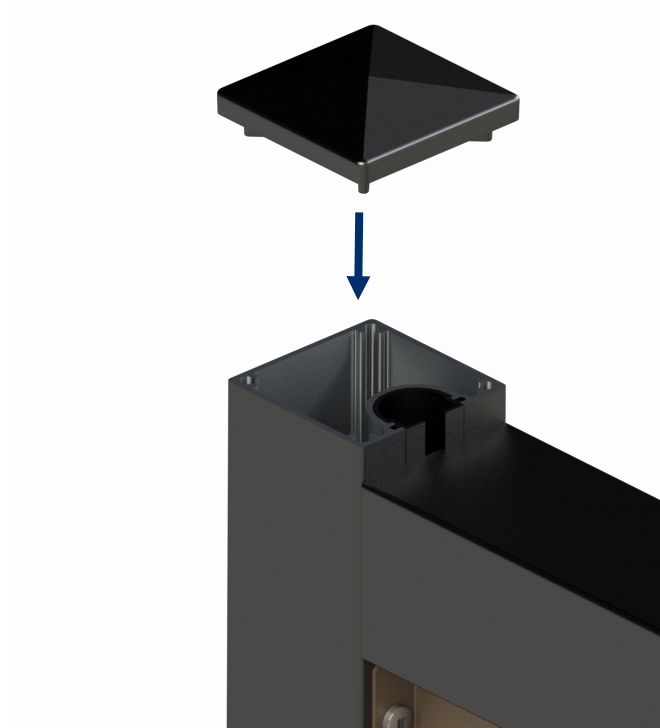


# PRIVACY GATE

## PRIVACY GATE INSTALLATION

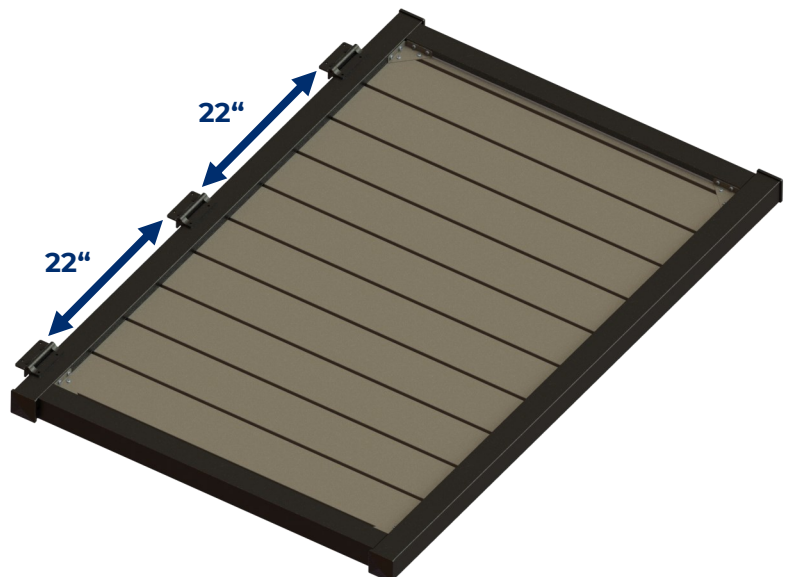
### STEP 5

Insert post caps on top of the gate. Gently tap with a rubber mallet until a solid fit is achieved



### STEP 6

Center middle hinge and place others symmetrically on both ends. Attach with #12x1" screws



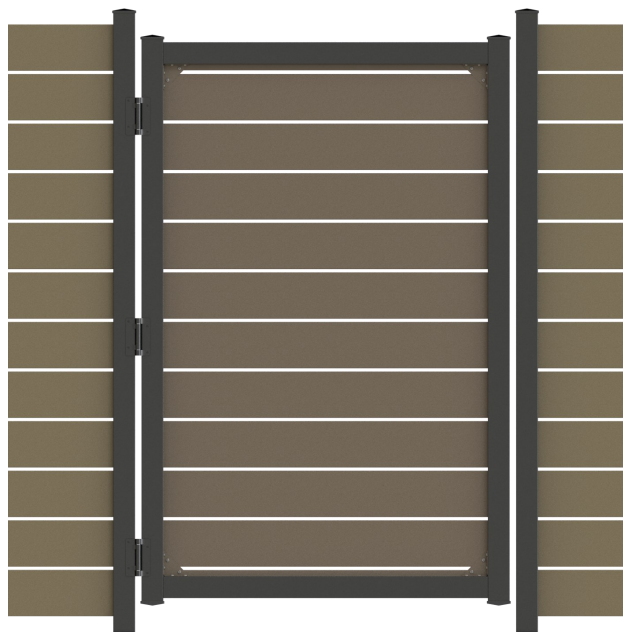
# PRIVACY GATE

## PRIVACY GATE INSTALLATION

### STEP 7

Install gate in your desired  
Location with supplied #12x1"  
screws.

Note: For best look align gaps in  
the gate with gaps in the privacy  
wall



### STEP 8

Add gate hardware.

