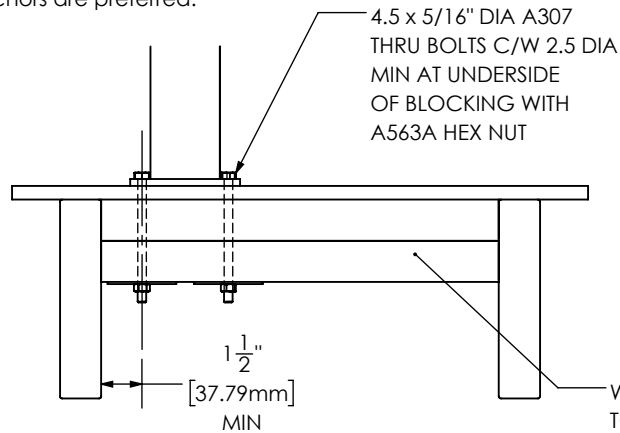
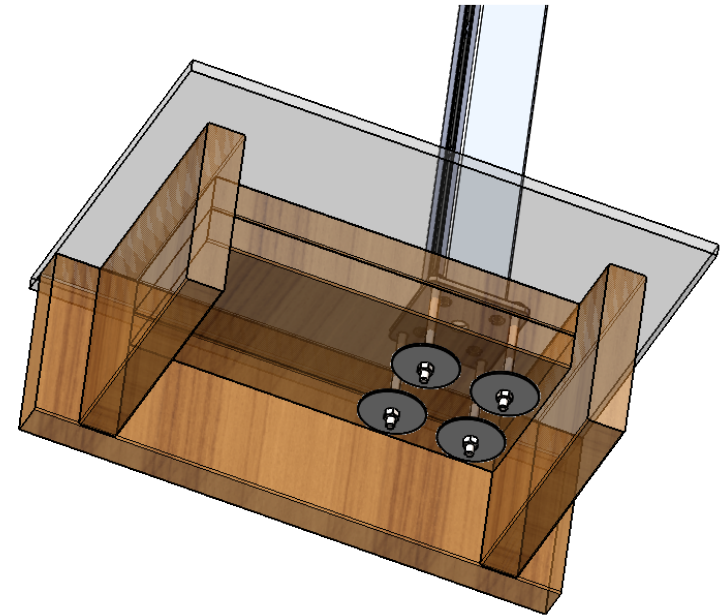
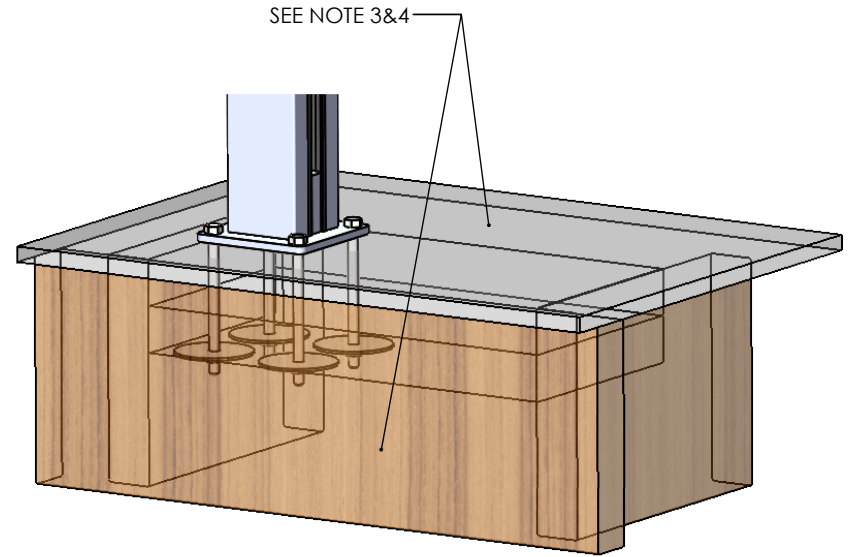
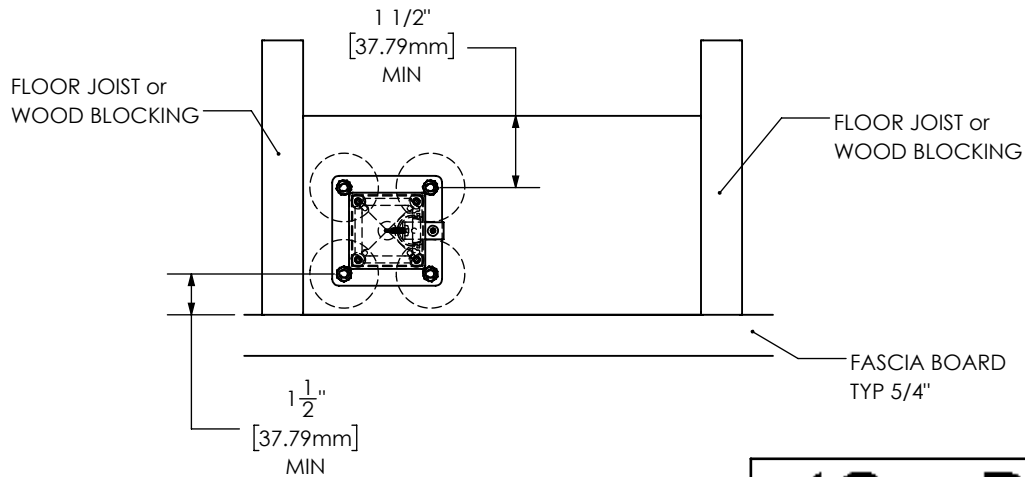


**Fastening Detail General Notes:**

1. Anchors required: 4.5" x 5/16" dia A307 Thru Bolts c/w 2.5" Washer
2. Anchor design complies with part 4 & Part 9 of NBC 2015, BCBC 2018, and OBC 2012.
3. Wood blocking connections to main are responsibility of others
4. Decking shown in drawing is for illustration only and in no way implies how to construct a deck.
5. The design is not applicable to open viewing stands without fixed seats and for means of egress in grandstands, stadia, bleachers and arenas.
6. If installed in coastal regions or in high corrosive areas, stainless steel anchors are preferred.



WOOD BLOCKING  
TO BE PERPENDICULAR  
TO WOOD GRAIN. WOOD BLOCK  
TO HAVE TWO PLY MINIMUM



**CenDek**  
Railings Ltd.

PROPRIETARY AND CONFIDENTIAL

THE INFORMATION CONTAINED IN THIS  
DRAWING IS THE SOLE PROPERTY OF  
CENDEK RAILINGS LTD. ANY REPRODUCTION IN PART  
OR AS A WHOLE WITHOUT THE WRITTEN PERMISSION  
OF CENDEK RAILINGS LTD IS PROHIBITED.

DRAWN BY	Admin
CREATED	2/26/2024
MATERIAL	
DIE NO.	
ALL DIMENSION IN INCHES/mm	

**DESCRIPTION**  
5ft Privacy Wall - Surface Mount -  
Fastening Details

**REVISIONS**

REV.	DESCRIPTION	DATE	INITIALS
------	-------------	------	----------

Part No. NA	Eng No. 2338AB
Weight 21.59 Lbs	SHEET 2 OF 2 Rev -