

**Century Surface Mount**  
2.5x2.5 Post

#### GENERAL NOTES:

1. Fastening required: Four 5/16-9 x 4 Hex Washer Head Lag Bolt (Leland)
2. Fastening design complies with Part 4.1.5.14 & Part 9.8.8.2 Loads on Guards/Handrails of the National Build Code (NBC 2020), BCBC 2024, and OBC 2012.
3. Minimum Wood blocking required: Three 2x8 SPF Grade 2 Lumber.
4. Up to 1070mm (42.126in) MAX distance from surface of deck to top of guard/handrail.
5. Wood blocking connections to main structure are the responsibilities of others.
6. Decking shown in drawing is for illustration only and in no way implies how to construct a deck.
7. The design is not applicable to open viewing stands and for means of egress in grandstands, stadia, bleachers and arenas.
8. If installed in coastal regions or in high corrosive areas, stainless steel anchors are preferred.
9. The fastener design is per the EMSEE Engineering Inc Test Report Number: A1500600 issued March 3rd, 2021.

(4) 5/16-9 x 4 Hex Washer Head Lag Bolt (Leland)



**CenDek**  
Railings Ltd.

#### PROPRIETARY AND CONFIDENTIAL

THE INFORMATION CONTAINED IN THIS DRAWING IS THE SOLE PROPERTY OF CENDEK RAILINGS LTD. ANY REPRODUCTION IN PART OR AS A WHOLE WITHOUT THE WRITTEN PERMISSION OF CENDEK RAILINGS LTD IS PROHIBITED.

DRAWN BY	Admin
CREATED	3/22/2018
MATERIAL	
DIE NO.	

ALL DIMENSION IN INCHES/mm

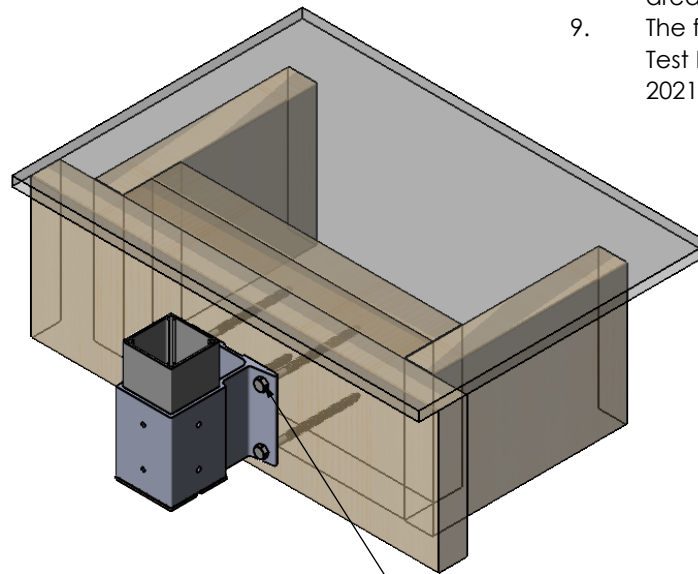
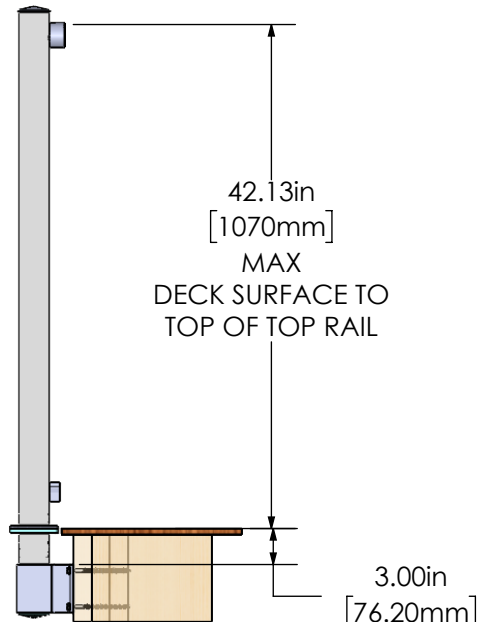
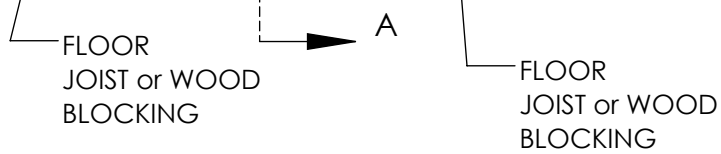
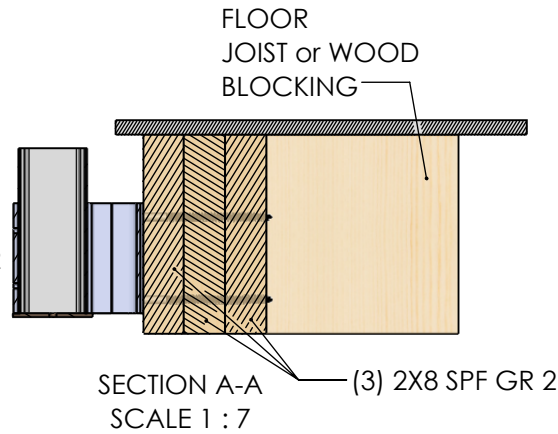
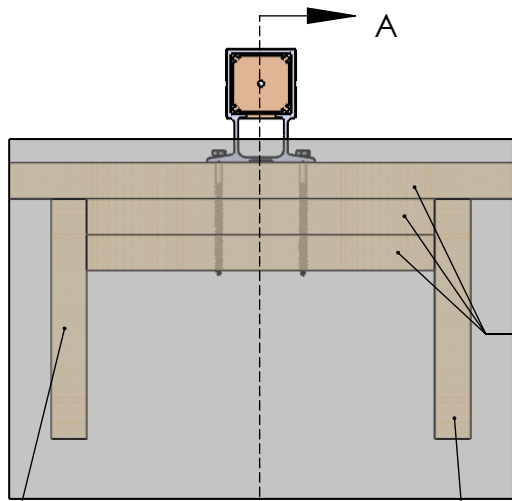
#### DESCRIPTION

Fastening Details - Wood - Century Aluminum Railings

Part No.	Eng No. 0517AD
Weight lbs	SHEET 1 OF 2 Rev 3

#### REVISIONS

REV.	DESCRIPTION	DATE	INITIALS
2	Additional Notes	2/26/2024	cc
3	Updated Note 2	9/9/2024	cc



**Century Fascia Mount**  
2.50 x 2.50 Post

(4) 5/16-9 x 5 Hex Washer Head Lag Bolt

#### GENERAL NOTES:

1. Fastening required: Four 5/16-9 x 5 Hex Washer Head Lag Bolt.
2. Fastening design complies with Part 4.1.5.14 & Part 9.8.8.2 Loads on Guards/Handrails of the National Build Code (NBC 2020), BCBC 2024, and OBC 2012.
3. Minimum Wood blocking required: Three 2x8 SPF Grade 2 Lumber.
4. Up to 1070mm (42.126in) MAX distance from surface of deck to top of guard/handrail.
5. Wood blocking connections to main structure are the responsibilities of others.
6. Decking shown in drawing is for illustration only and in no way implies how to construct a deck.
7. The design is not applicable to open viewing stands and for means of egress in grandstands, stadia, bleachers and arenas.
8. If installed in coastal regions or in high corrosive areas, stainless steel anchors are preferred.
9. The fastener design is per the EMSEE Engineering Inc Test Report Number: A1500600 issued March 3rd, 2021.



**CenDek**  
Railings Ltd.

#### PROPRIETARY AND CONFIDENTIAL

THE INFORMATION CONTAINED IN THIS DRAWING IS THE SOLE PROPERTY OF CENDEK RAILINGS LTD. ANY REPRODUCTION IN PART OR AS A WHOLE WITHOUT THE WRITTEN PERMISSION OF CENDEK RAILINGS LTD IS PROHIBITED.

DRAWN BY	Sam Burke
CREATED	3/22/2018
MATERIAL	
DIE NO.	

ALL DIMENSION IN INCHES/mm

#### DESCRIPTION

Fastening Details - Wood - Century Aluminum Railings

Part No.	Eng No. 0517AD
Weight	lbs
SHEET 2 OF 2	Rev 3